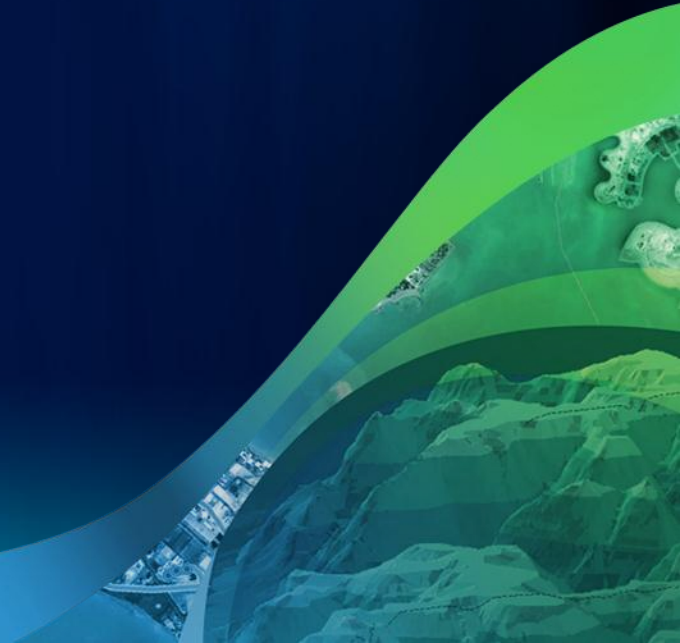




ArcGIS 10.1 Lidar Workshop

# ArcGIS Server, the Cloud, Image Extension

Presentation 5



# How to Serve Lidar Data

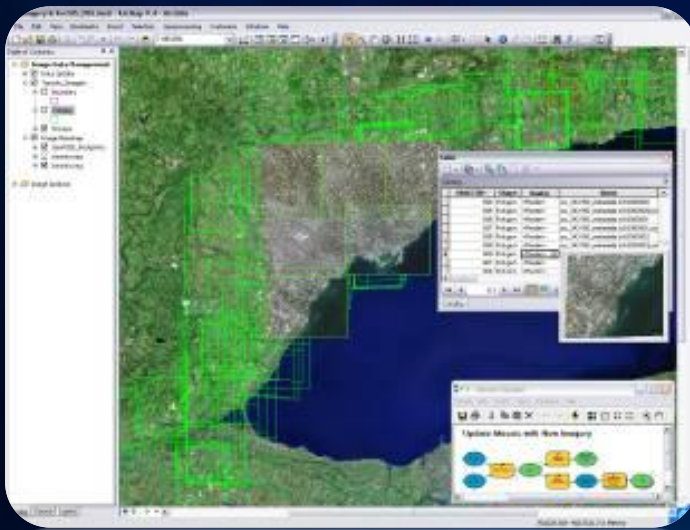
- Image Service
  - Lidar data (or imagery) added to a mosaic dataset and made available by a server to a client application
- Map Service
  - Point data, terrain dataset, or mosaic dataset added to a map document and made available by a server to a client application

# Image Service Versus Map Service

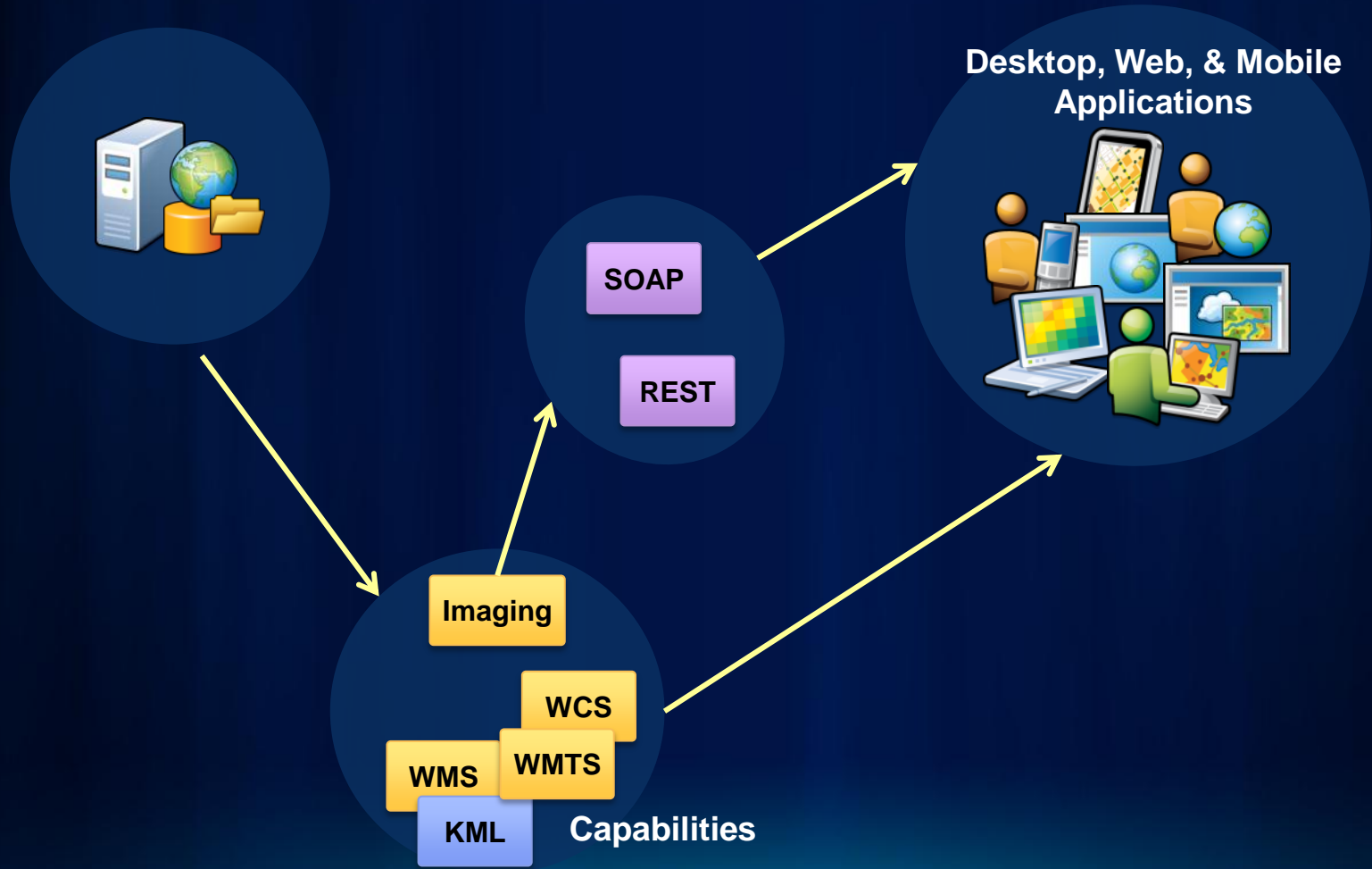
Image Service	Map Service
Serves imagery (+ lidar data) data	Serves a map document containing: <ul style="list-style-type: none"><li>• imagery / mosaic dataset</li><li>• vector data</li><li>• terrain dataset</li></ul> <p>*Cannot contain a LAS dataset</p>
Layer properties can be altered by client	Client views map service as it was designed Client cannot change layer properties
Can be saved as a layer and used as a data source	
Users can download or upload data	

# What Can You Do With An Image Service?

- Use it as an image (visual analysis)
- Use it as raster data (pixel analysis)
- Access it as a catalog (mosaic dataset)



# How Can You Access an Image Service?



# Image Service Capabilities (for Lidar)

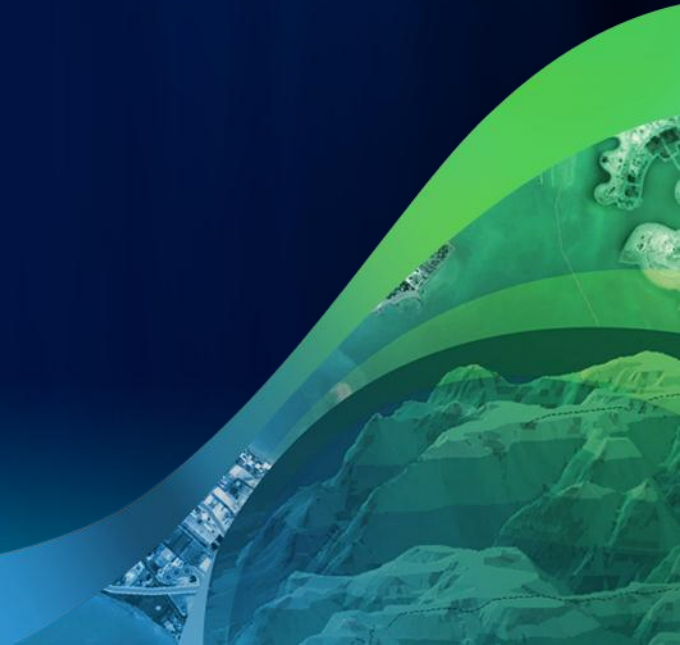
- Limits what users can do with your Web service

---

<b>Image</b>	<b>Allows the image to be displayed</b>
Metadata	Allows the client to see metadata for the image service and for each dataset in a mosaic dataset
Catalog	Allows the client to open the mosaic dataset table when it is served
Download	Allows rasters, LAS files, and LAS datasets to be downloaded
Edit	Allow clients to add, delete, or update the dataset published by the image service

---

# Available Image Services



# Landsat Services

Natural Color



False Color



Atmospheric Penetration



Land-Water Boundary



Agriculture



NDVI



**USGS Global Land Survey Dataset**

**34,000 Scenes**

**Published Image Service**



A world map showing elevation data. The map uses a color scale where green represents low elevations, yellow and orange represent intermediate elevations, and brown and red represent high elevations. The highest elevations are concentrated in the Himalayas and the Andes. The map is set against a blue background representing the oceans.

# Elevation Services

Global

Multi-Resolution

Multi-Source

Coming Soon: currently in open Beta

# Demo: Accessing Services



# Exercise

---

In this exercise, you will:

- Access services on ArcGIS Server
- Examine the service properties
- Query and explore the data