



**2012 Kentucky GIS Conference**

Louisville, Kentucky

**Instructor Led Workshop | October 29, 2012**

# Getting Started with ArcGIS

## 10.1

Eric Rodenberg





# Agenda

Esri Software News

**What is new in ArcGIS 10.1**

**Questions**

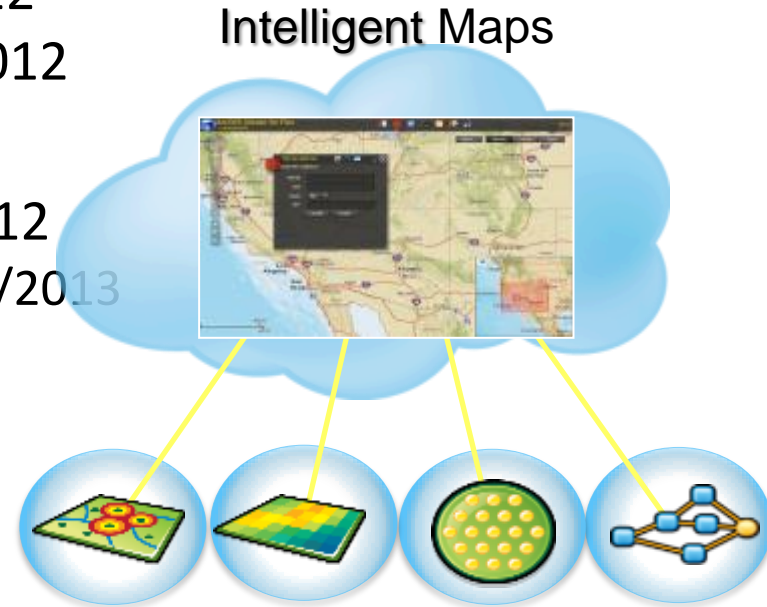
# ArcGIS 10 (Desktop, Engine, and Server) News

- ArcGIS 10 Service Pack 5 07/2012
- ArcGIS 10.1 Service Pack 1 10/15/2012



# Web Mapping API and Viewer News

- ArcGIS API for JavaScript 3.1 6/2012
- ArcGIS API for Flex 3.1 10/2012
  - ArcGIS Viewer for Flex 3.1 10/2012
  - Application Builder
- ArcGIS API for Silverlight 3.1 11/2012
  - ArcGIS Viewer for Silverlight 2.1 7/2013
  - Application Builder
- ArcGIS API for WPF
- ArcGIS for SharePoint 2.1.1





# Agenda

**Esri Software News**

What is new in ArcGIS 10.1

**Questions**

# The Internet is the common denominator

Websites



Smartphones & tablets



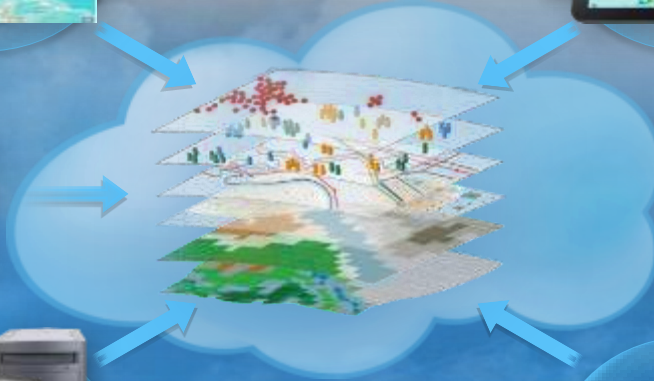
Viewers



Desktops



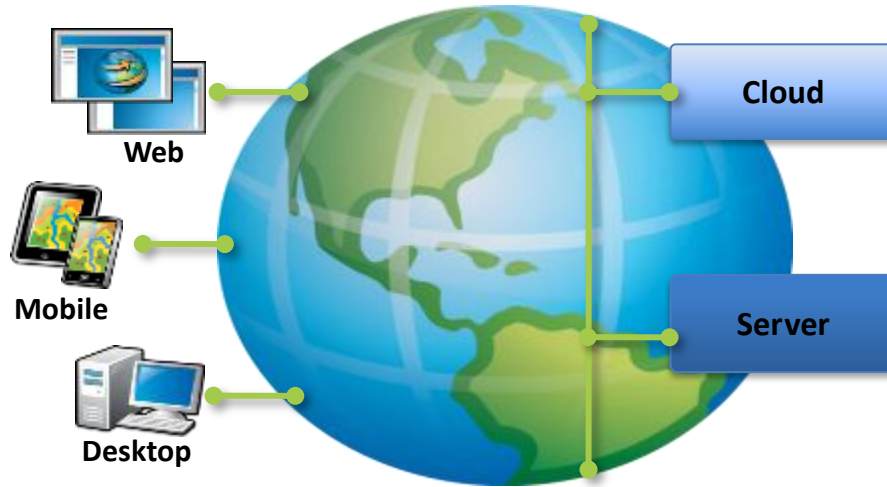
Other mobile devices





# ArcGIS 10.1 Themes

- **Online**
- **Desktop**
- **Server**
- **Mobile**
- **Developer**
- **Solutions**

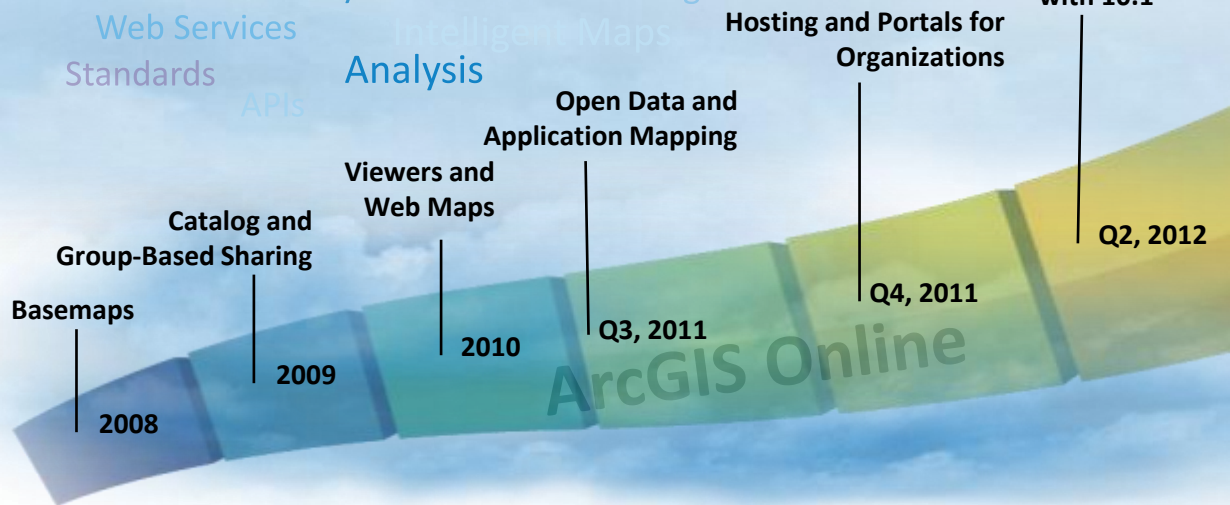




# ArcGIS Online is evolving rapidly

- Becoming a complete online geospatial platform

Basemaps  
Mapping  
User Content  
Applications  
Web Services  
Standards  
APIs  
Mobile  
Sharing  
Images  
Any Device  
Analysis  
Groups  
Open Data  
Catalog  
Intelligent Maps  
Templates  
Geocoding

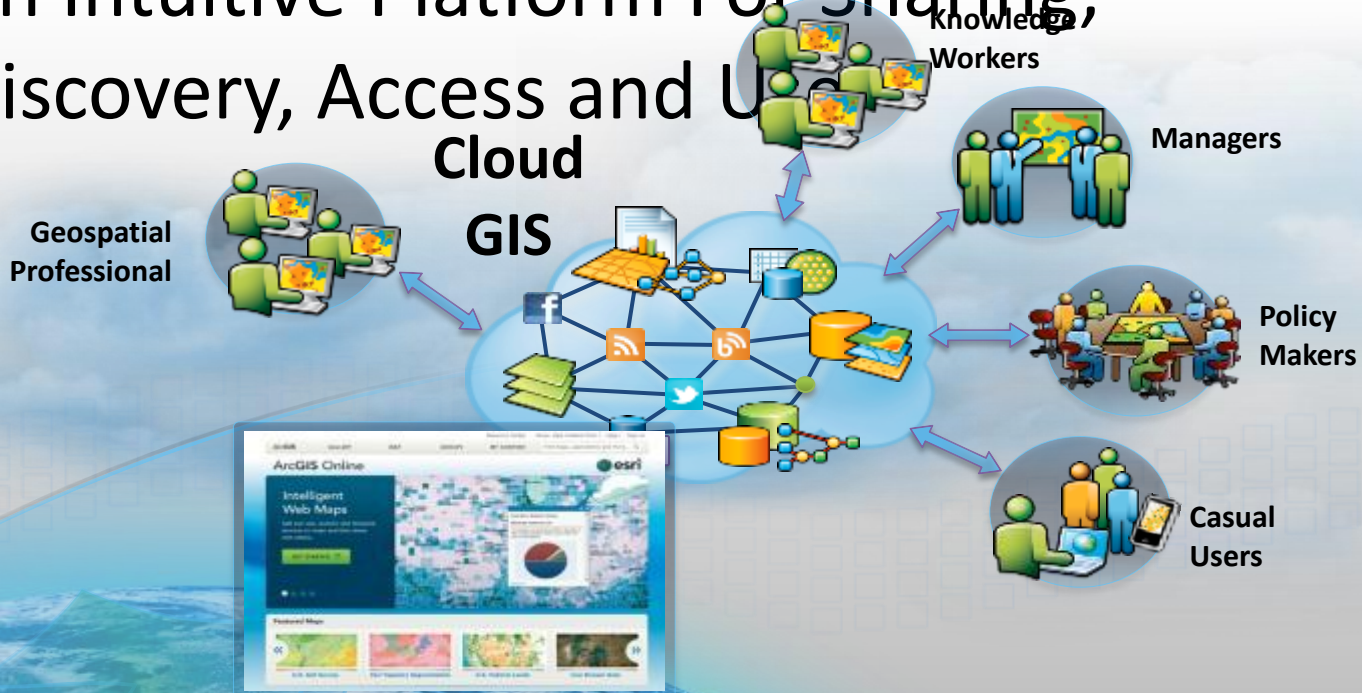


*Online and On Premise*



# A New Pattern Is Emerging

- An Intuitive Platform For Sharing, Discovery, Access and Use



- Creating An Online Collaboration Framework

# Sharing your work

- Demonstration



Your maps, a browser or  
smartphone, and their ideas

# ArcGIS Product Names

- Simplified for 10.1



## ArcGIS for Desktop

- Basic
- Standard
- Advanced



## ArcGIS for Server

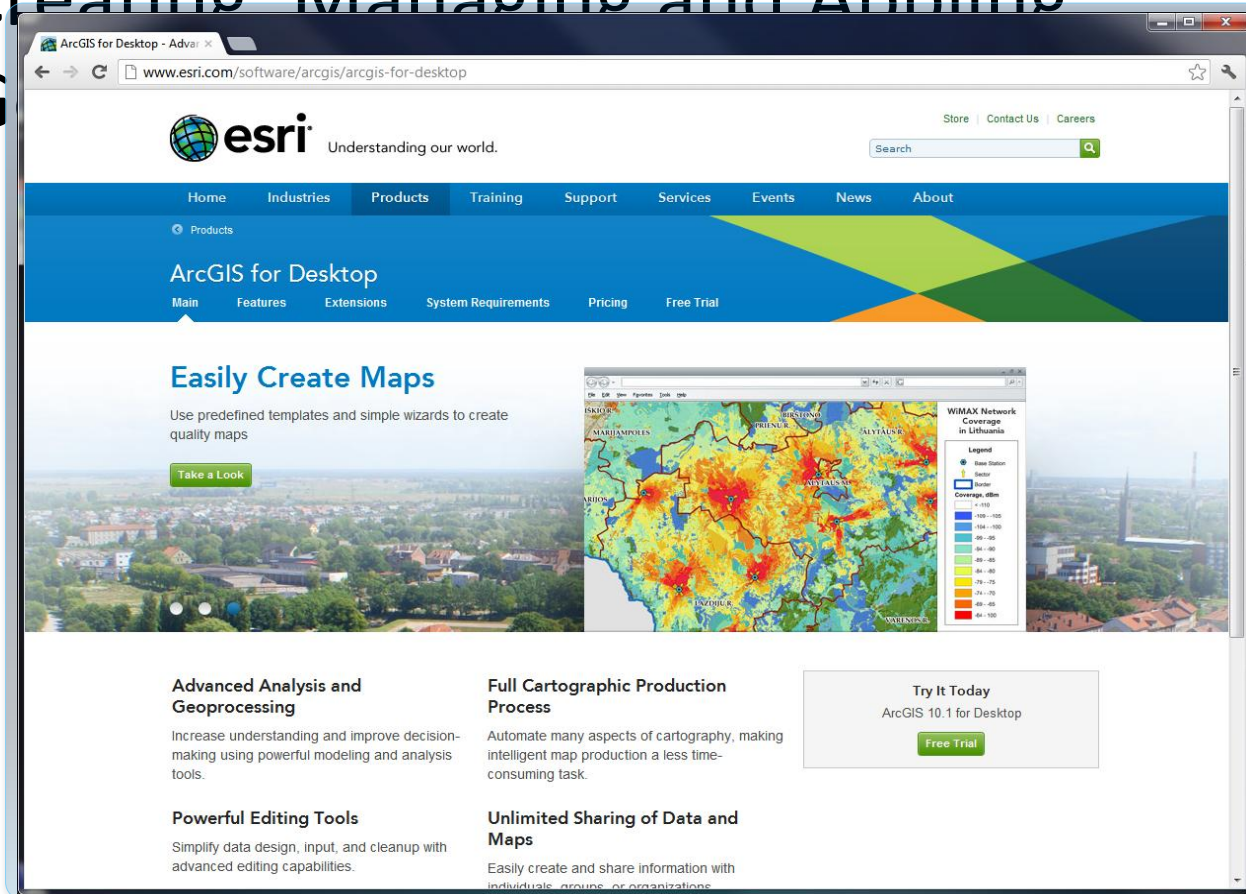
- Basic
- Standard
- Advanced
  
- ArcGIS Server for (Windows)
- ArcGIS Server for (Linux)



**ArcGIS for Windows Mobile**  
**ArcGIS SDK for Windows Mobile**

# Desktop GIS

- Creating Managing and Anpling  
G



# 10.1 ArcGIS for Desktop

- Improves All Aspects of GIS on the

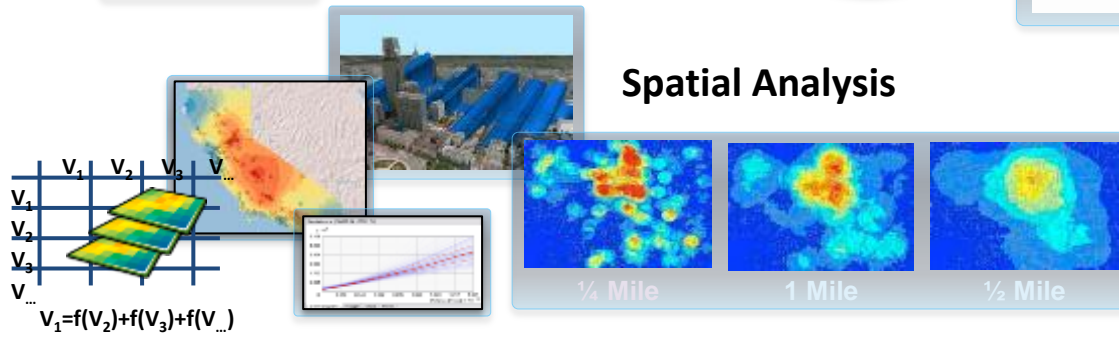
Mapping & Visualization



Editing



Spatial Analysis

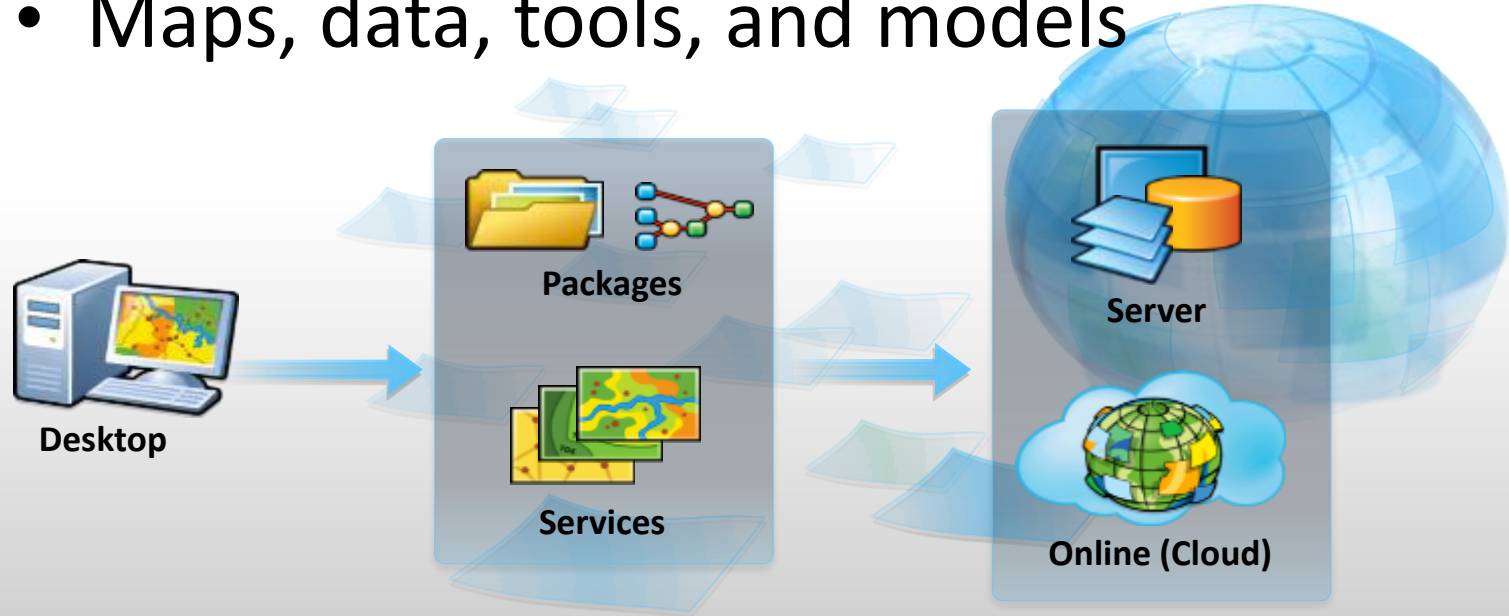


Geodesic buffers



# ArcGIS simplifies sharing your work

- Maps, data, tools, and models



- Automating the process of creating services

# Productivity Enhancements

- Demonstration



Your maps, a browser or  
smartphone, and their ideas



# Server GIS

- Foundation for Geospatial  
Intelligence

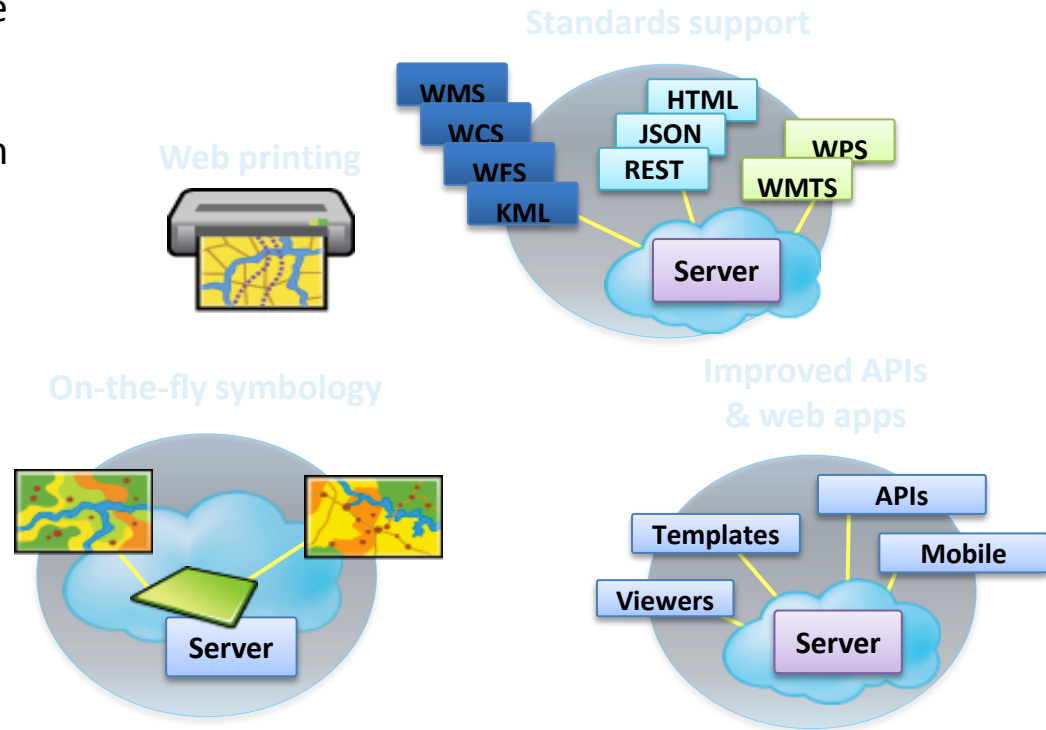
The screenshot displays the ArcGIS for Server website. At the top, the browser address bar shows 'www.esri.com/software/arcgis/arcgisserver'. The Esri logo and tagline 'Understanding our world.' are on the left, with a search bar on the right. A navigation menu includes 'Home', 'Industries', 'Products', 'Training', 'Support', 'Services', 'Events', 'News', and 'About'. Below this, a sub-menu for 'ArcGIS for Server' lists 'Main', 'Features', 'System Requirements', 'Extensions', 'Showcase', and 'Pricing'. The main content area features a large heading 'Take command of your geospatial services' with the subtext 'Create, manage, and distribute secure GIS services to support web, desktop, and mobile applications.' This is accompanied by images of a desktop monitor, a tablet, and a smartphone, all displaying various GIS maps and data visualizations. Below the main heading, there are three columns of content:

- Deliver GIS Services**: With ArcGIS for Server, you have complete control and centralized management over how and where your GIS services are delivered. [Learn more.](#)
- Respond to the Demand for GIS**: ArcGIS for Server provides you with a scalable GIS server platform that gives you total supervision of all your GIS servers. [Learn more.](#)
- Power Applications with GIS**: ArcGIS for Server gives your enterprise applications access to powerful GIS capabilities and server-side processing. [Learn more.](#)

The footer of the page shows 'www.esri.com'.

# ArcGIS server is improving

- Enhancing the architecture and adding capabilities
  - Improved performance
  - Easy install/admin
  - Simple service creation
  - Native 64-bit
  - Strong Linux
  - Highly scalable



- Providing a more open and productive platform

# Installing ArcGIS Server

- Demonstration



Your maps, a browser or  
smartphone, and their ideas

# ArcGIS supports all popular mobile devices

- Ruggedized devices, smartphones and tablets



- Connecting with field-workers and citizens
- Supporting you anytime you are not at your desk



# Deploying Mobile Solutions

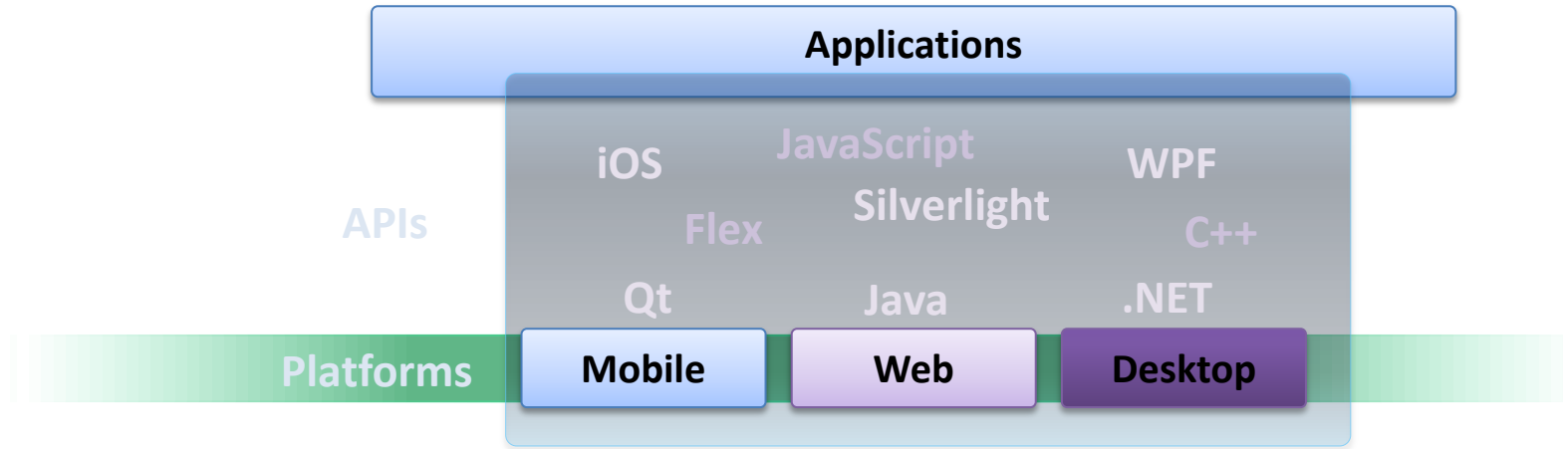
- Demonstration



Your maps, a browser or  
smartphone, and their ideas

# ArcGIS Empowers Developers

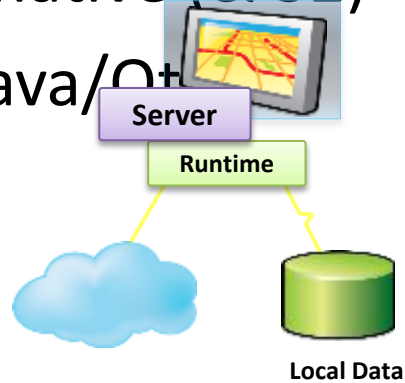
- Supporting Multiple Platforms and APIs



- Geospatially Enabling Applications

# 10.1 ArcGIS Can Now Be Embedded Anywhere

- New Lightweight Runtime Platform
- Easy to Deploy
- Fast
- Small Footprint
- Windows/Linux
- 64-bit native (& 32)
- WPF/Java/Qt



- Provides Rich Geospatial Functionality

# ArcGIS for . . .

- New Initiative - Solutions and Communities of Users

Public Safety Planning and Development  
Land records Public Works  
Elections  
Water Utilities Military—Maritime Operations  
Military—Land Operations  
Emergency Management Local Government  
National Government State Government  
Demographics Intelligence Petroleum  
Gas Utility DOT National Guard  
Housing Health Telco Ocean Use Planning  
Non-Profit and NGOs Facilities Military City



# Deploying Applications

- Demonstration



Your maps, a browser or  
smartphone, and their ideas

# What's Next?

- Many Development Initiatives



**Your Input Is Driving Our Work**



# Agenda

**Esri Software News**

**What is new in ArcGIS 10.1**

Questions

